

P.I.Web Product Sheet

P.I.Web is a Web Based Performance Management tool which keeps an eye on the whole network including radio, transmission and core, for both 2G, 3G and 4G networks.

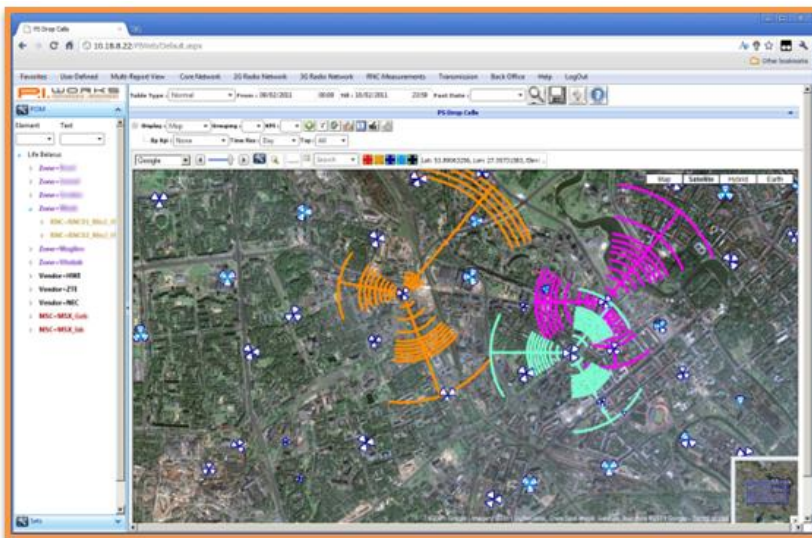
P.I.Web's unique features meet the requirements of network engineers and managers to overcome shortcomings of the offerings in the market place.

P.I.Web is multi-vendor / multi-technology compliant

- P.I.Web's multi-vendor , multi-technology compability enables to see the network as a whole.
- Multi-Vendor capability enables **KPI translation** between multiple vendors. It also eliminates the necessity of vendor specific knowledge.

P.I.Web displays reports near real-time.

- Reports are near-realtime and the data is visible minutes after the data is generated.
- Data is collected 7/24 - 365 days.
- Minimal hardware and maintenance cost in the market with the best end-user experience.
- Unlimited data storage capabilities enables long term trend analysis.

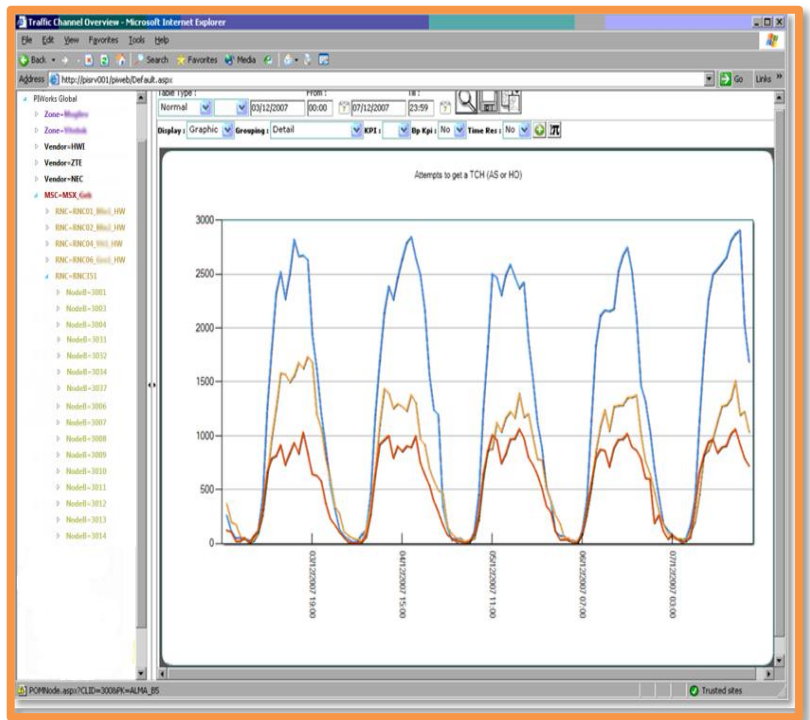


P.I.Web offers strong alarming features.

- Threshold based performance alarms warns about KPI's that exceed the defined treshold value.
- Floating KPI alarms constantly analyses the performance trend and pro-actively warns for an anomaly in the network.
- Alarms can be send via email, sms or SNMP to any fault management system.

P.I.Web has a flexible user interface

- Users can create new reports or modify existing reports by themselves in minutes and no additional administration or development is needed.
- Users can easily add&edit KPI's with P.I.Web's multi-vendor KPI editor.
- Unlimited number of reports and KPI's can be defined.
- No SQL or Database knowledge is required for report or KPI definitions.
- Cluster creation functionality enables to create a cell cluster for specific analysis..
- Busy Hour reports for multiple KPI's are supported.
- Reports can be generated as tabular,graphical or map display
- Displays various cell information such as planning data or required KPIs on Map Display
- Web based user friendly interface allows to reach the application without the need of client installation.
- Automatic Report Generation option delivers the required reports or reportsets to user's e-mail addresses as xlsx, pdf, ppt, csv files on defined intervals.
- Auto run reports enables to refresh a report in a defined interval for monitoring purposes.
- With Role Based Security Control , users can only access reports they are granted to.
- Drill- down capabilities within the same report gives superior advantage during analyses and reporting. Users can check BSC/RNC wide performance of a region and then drill down to cell based grouping without changing the existing report.



P.I.Web offers all the required features for Network Performance Management with extended Reporting, Alarming,Monitoring capabilities.